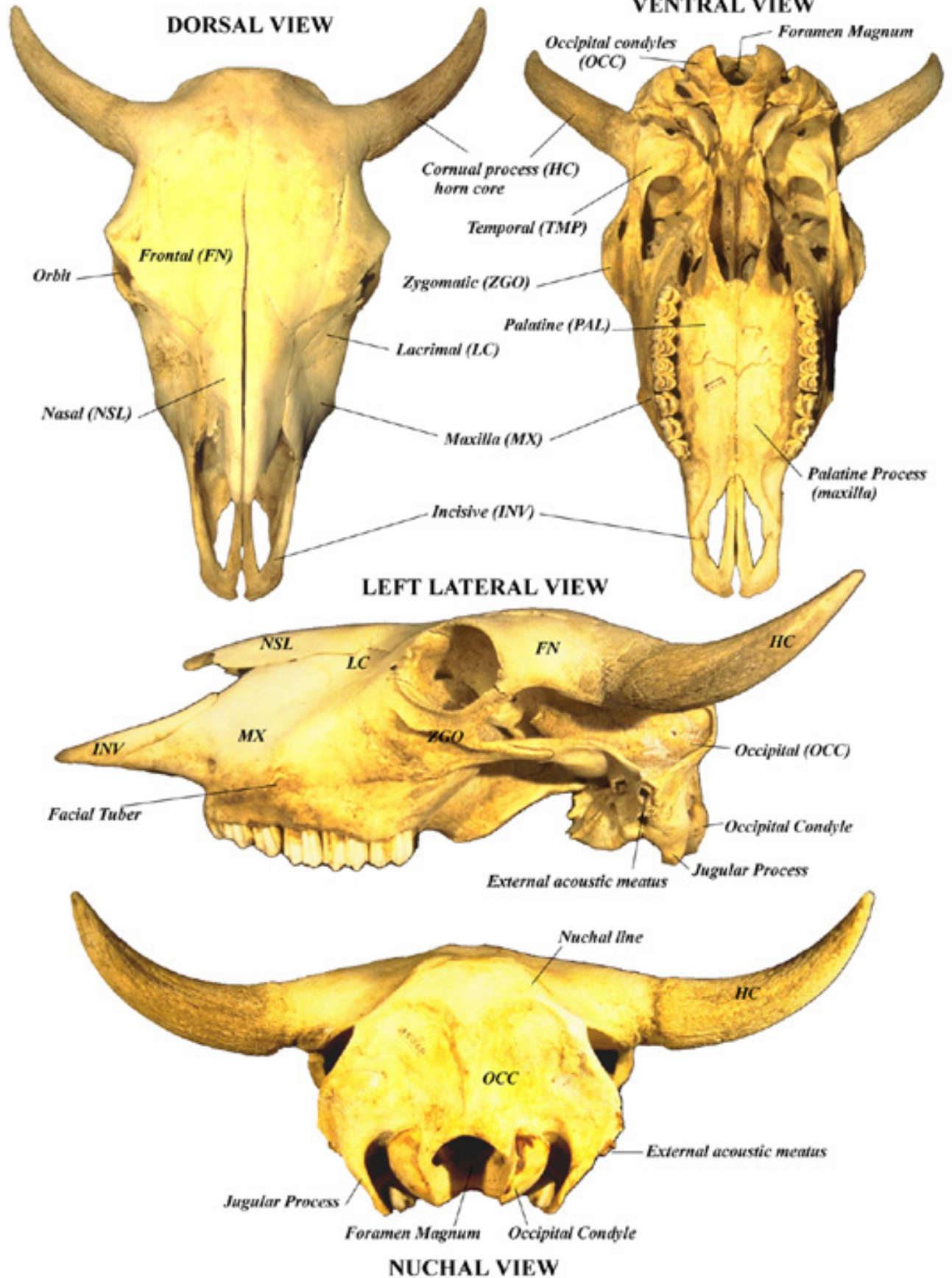


Bison Bones

L. Todd

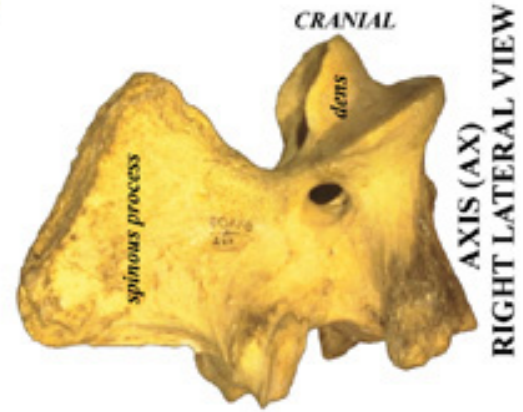
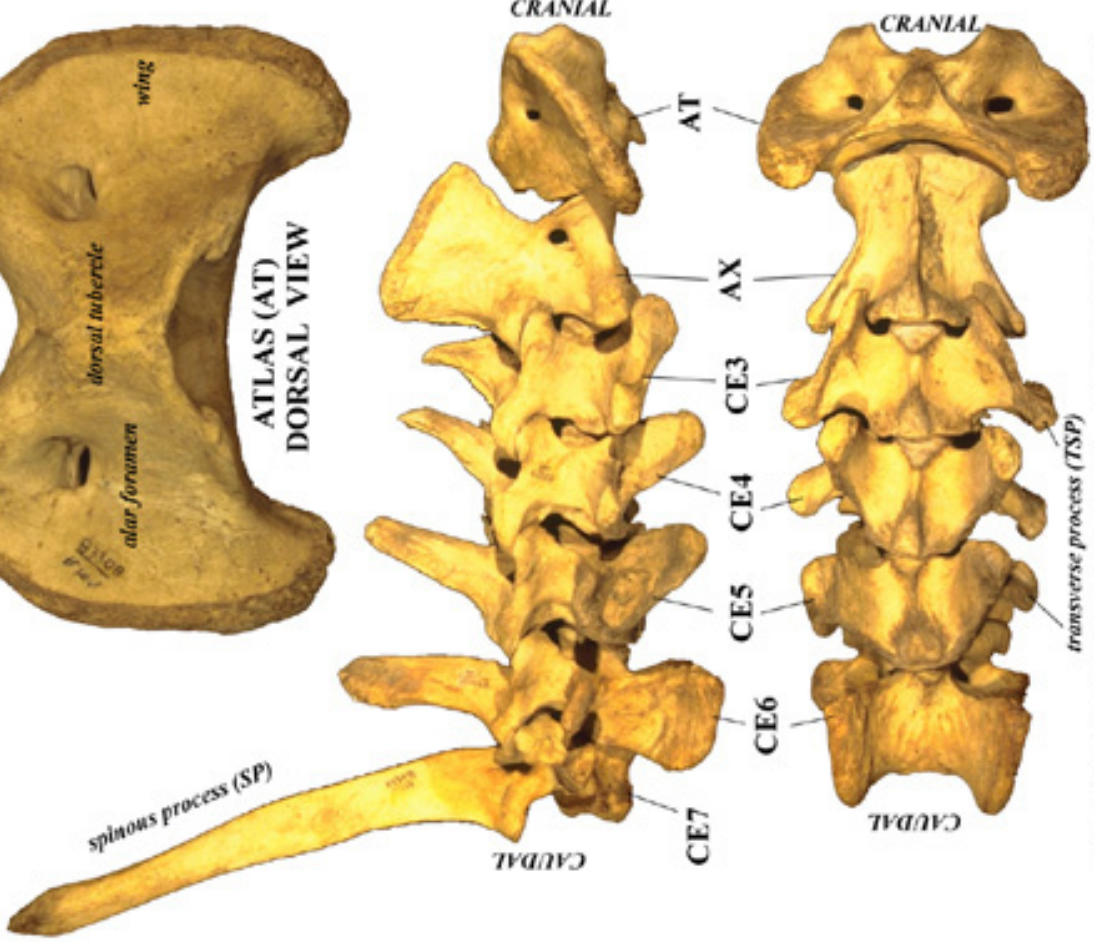
<http://grslearchaeology.org/education/bison-bones/>

CRANIUM



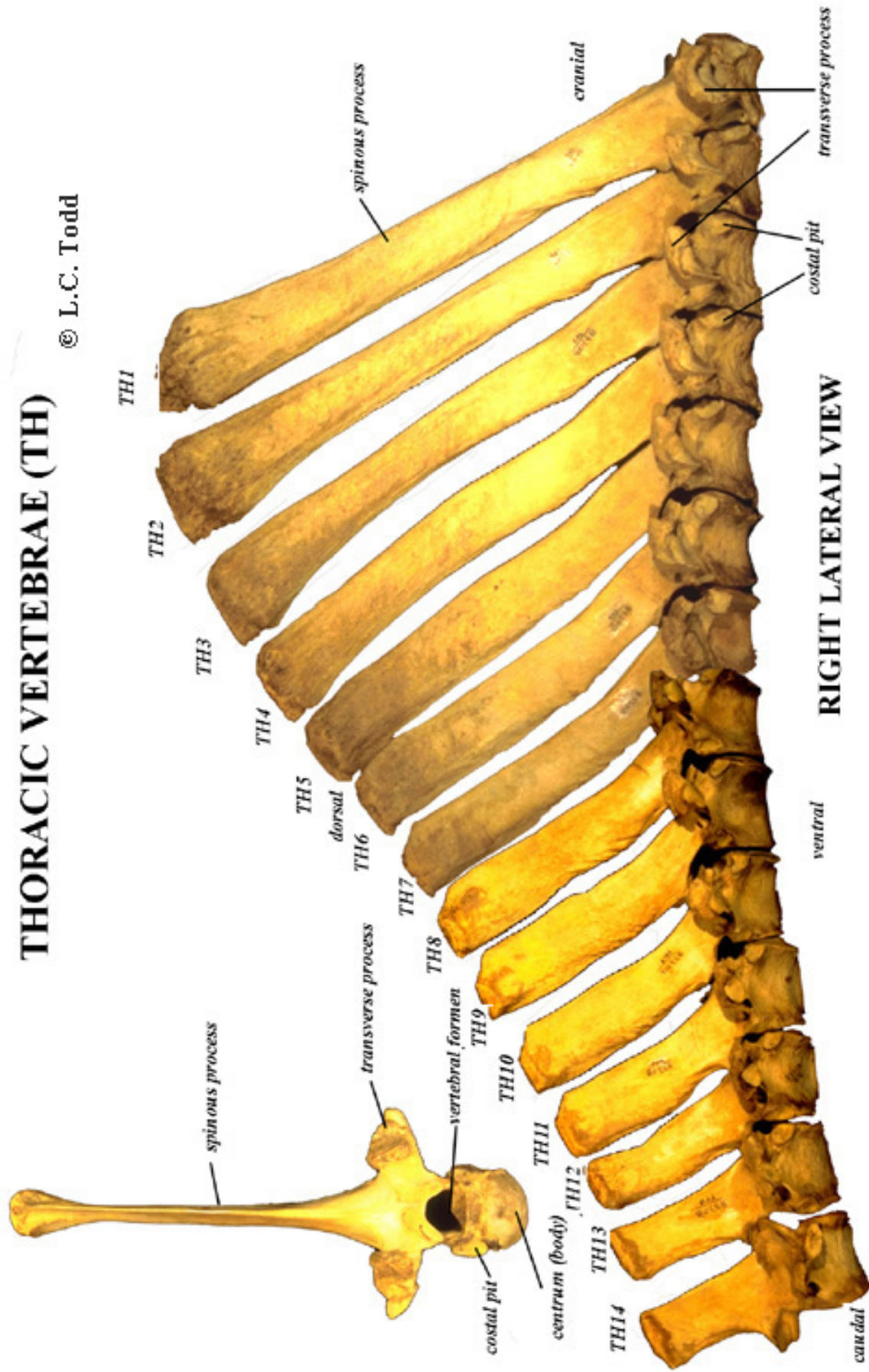


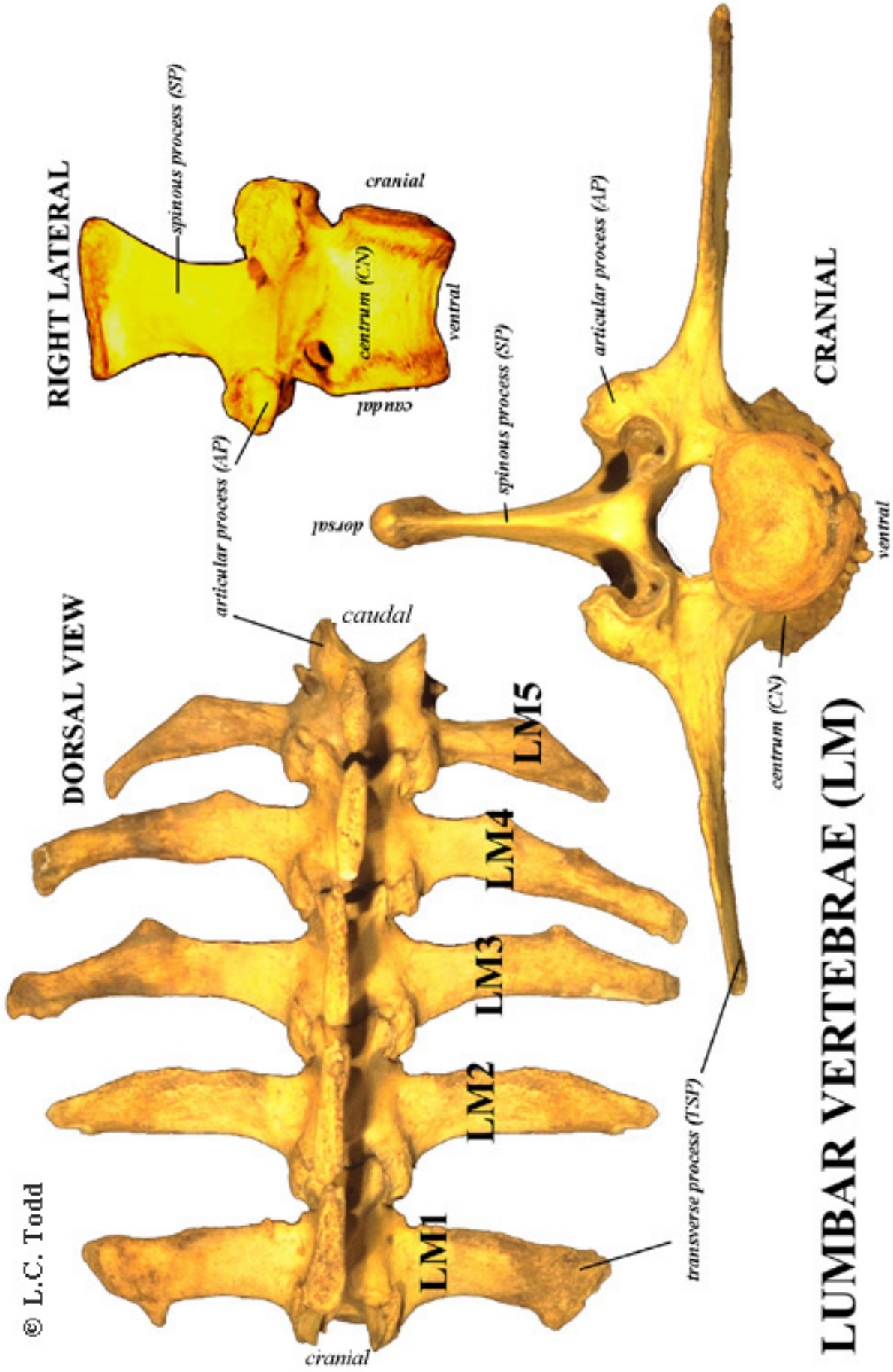
dorsal tubercle



THORACIC VERTEBRAE (TH)

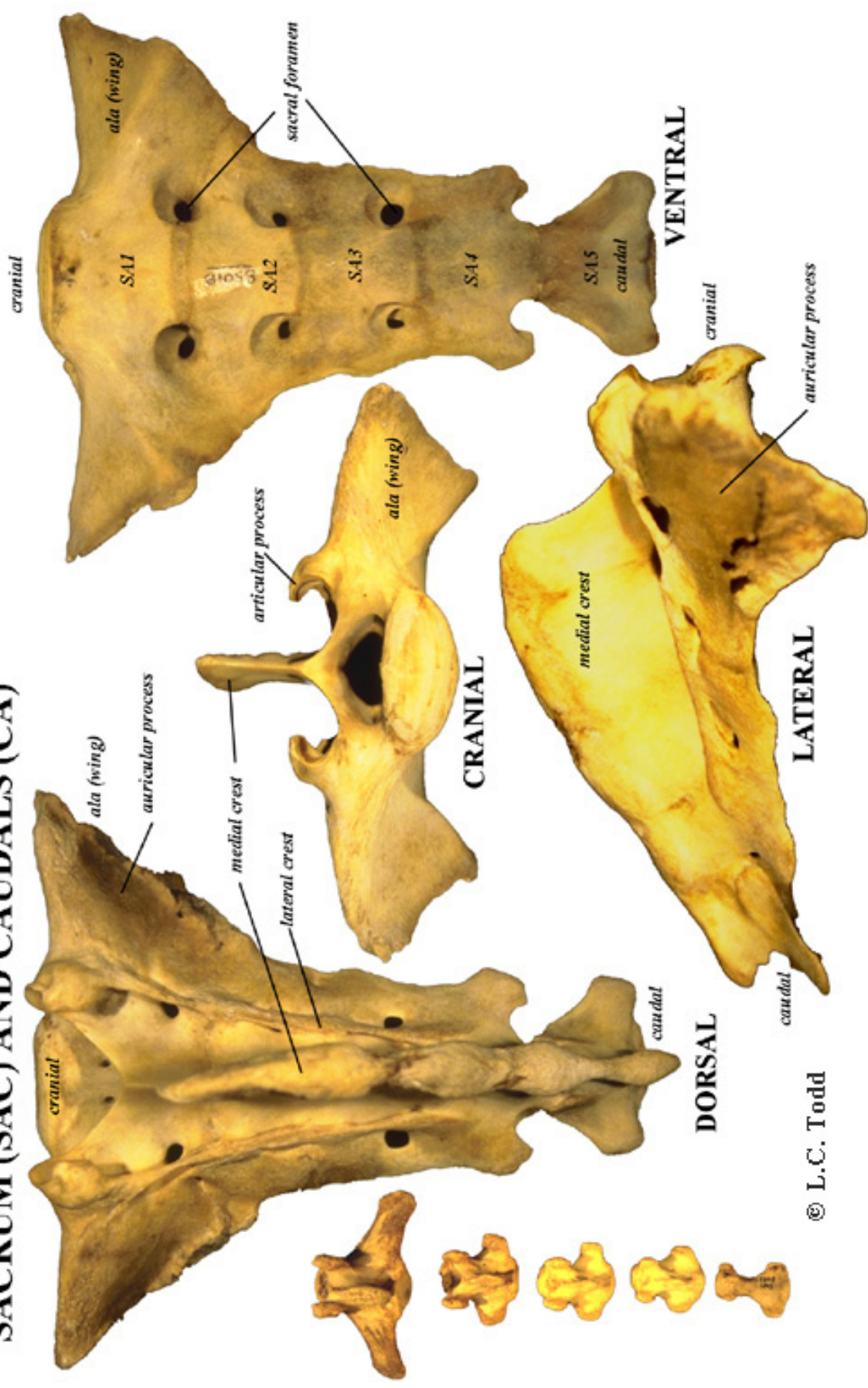
© L.C. Todd



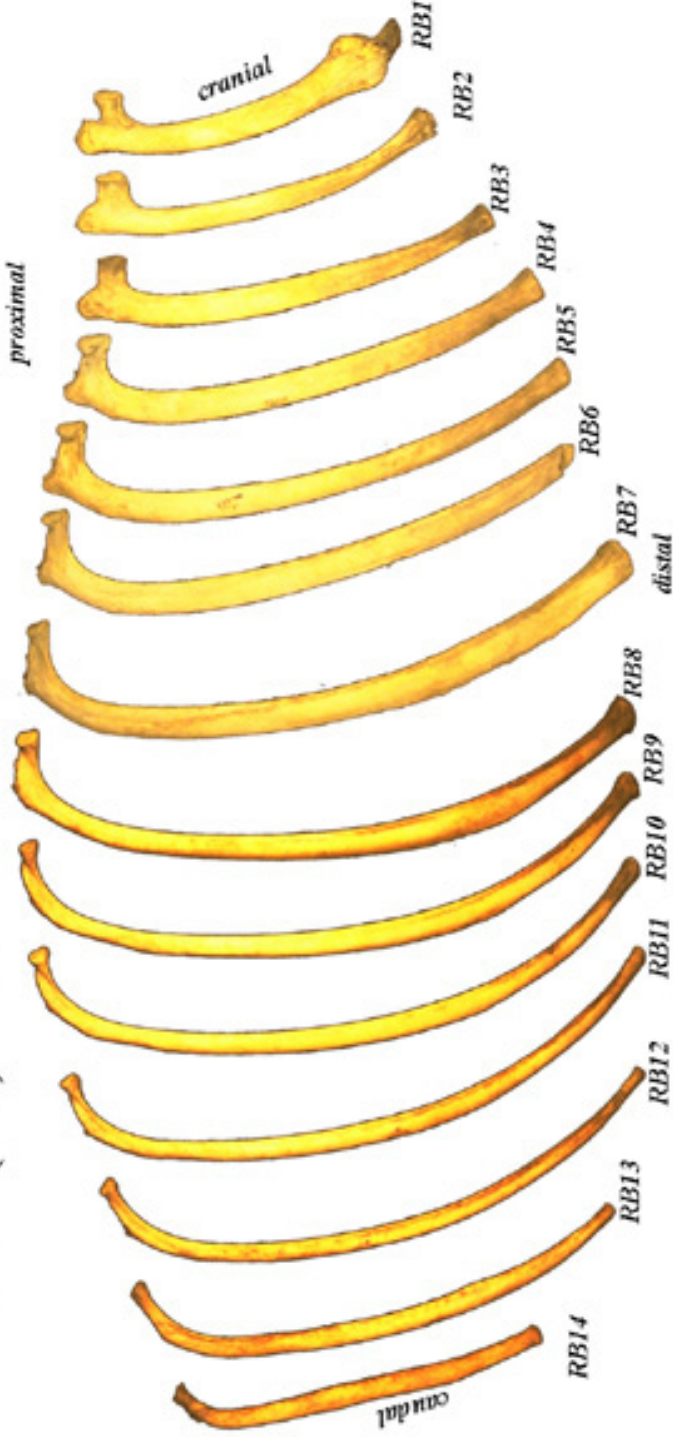
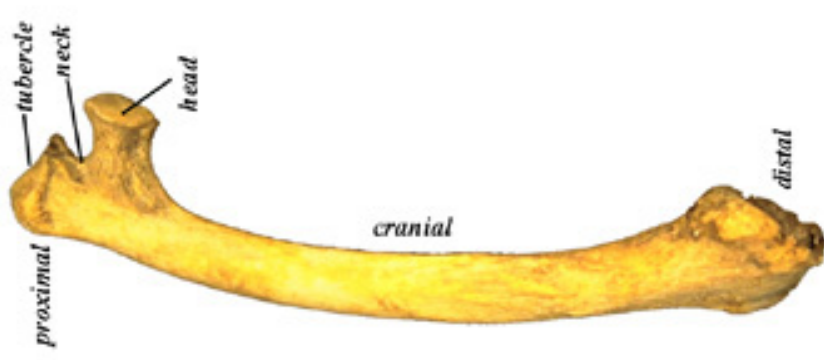


LUMBAR VERTEBRAE (LM)

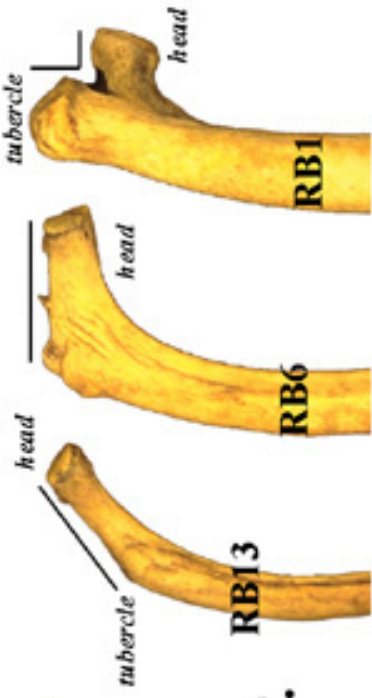
SACRUM (SAC) AND CAUDALS (CA)



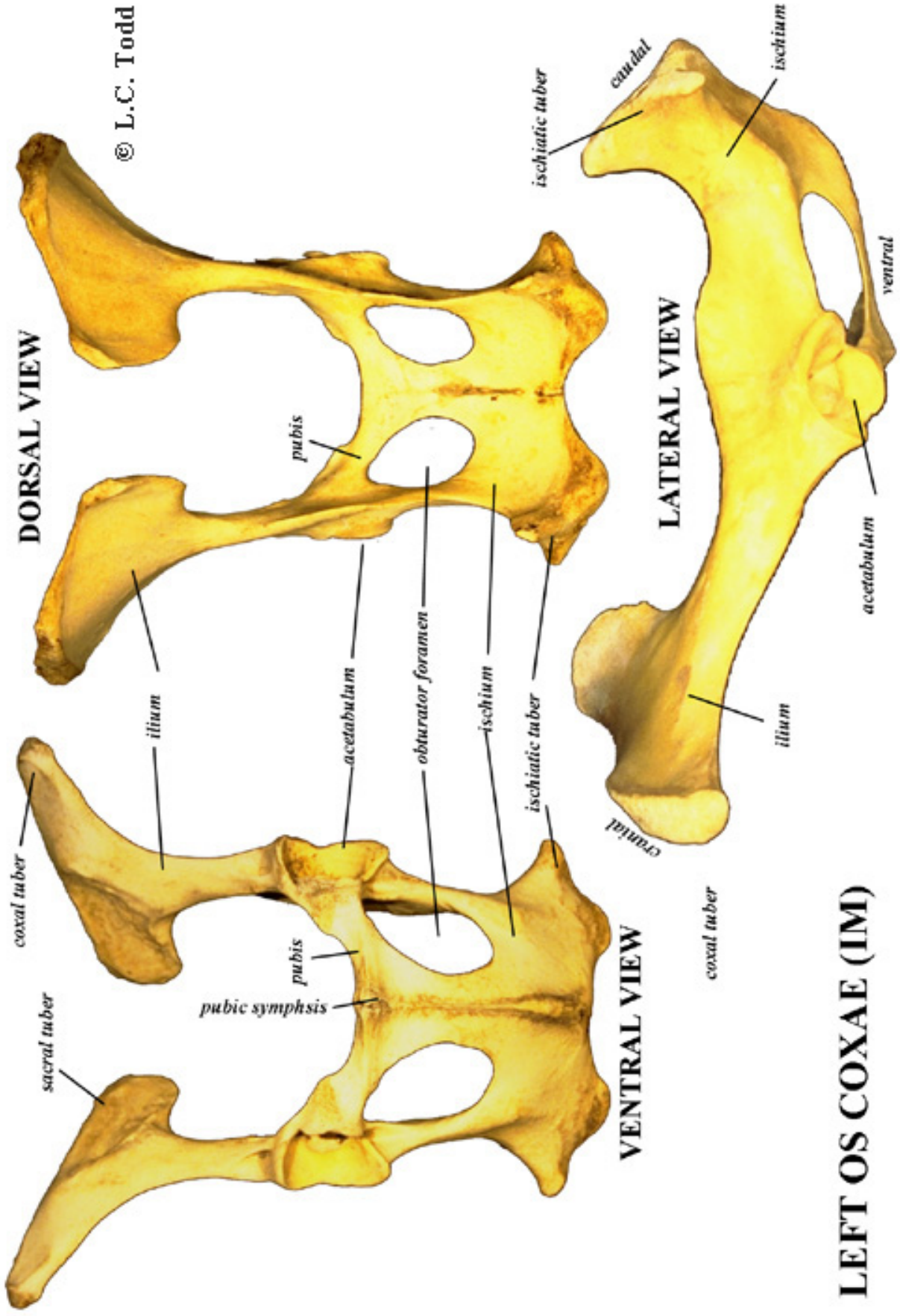
RIBS (RB) LEFT



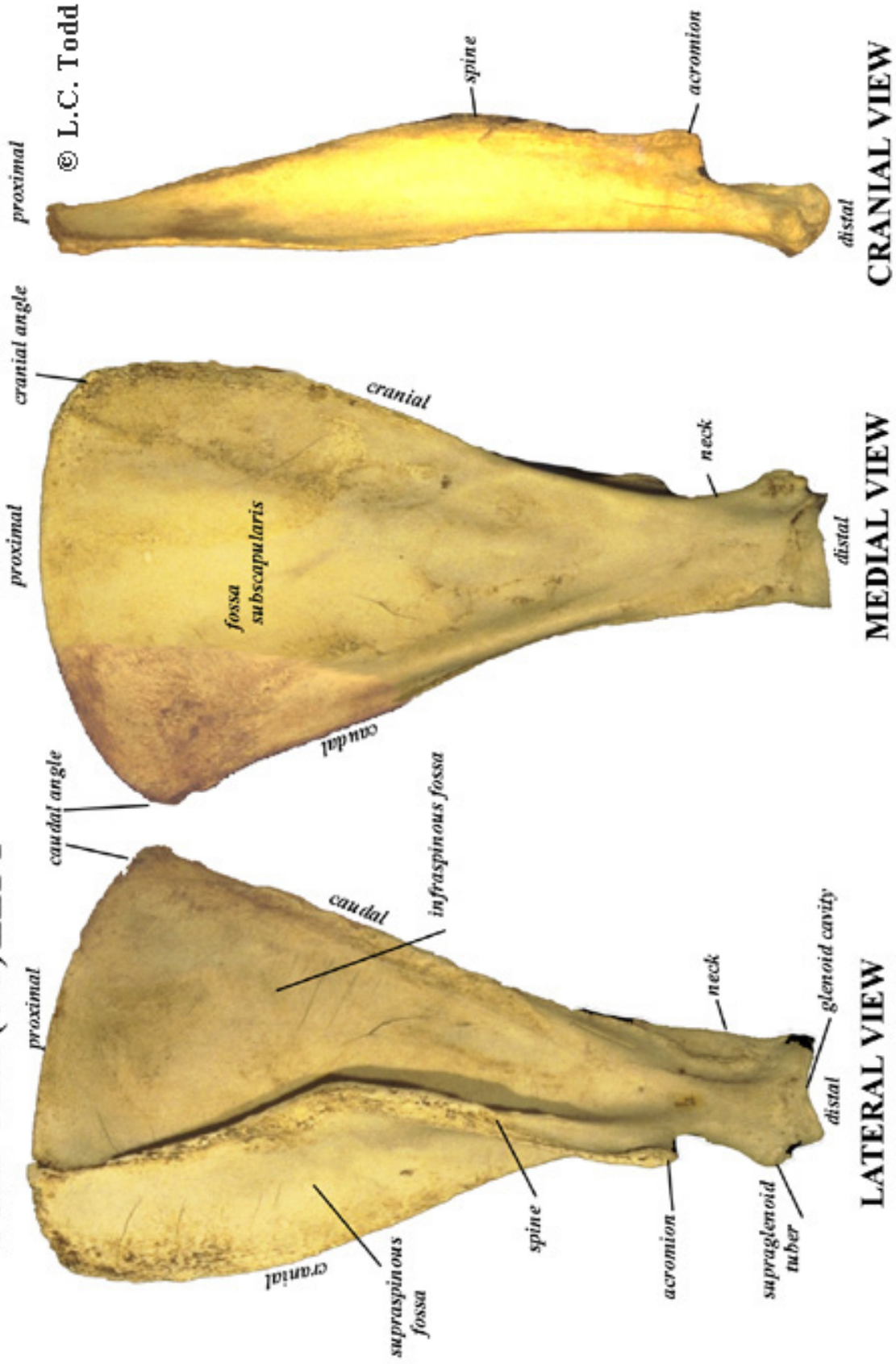
STERNAL BODIES (SN)



COSTAL CART. (CS)



SCAPULA (SC) LEFT

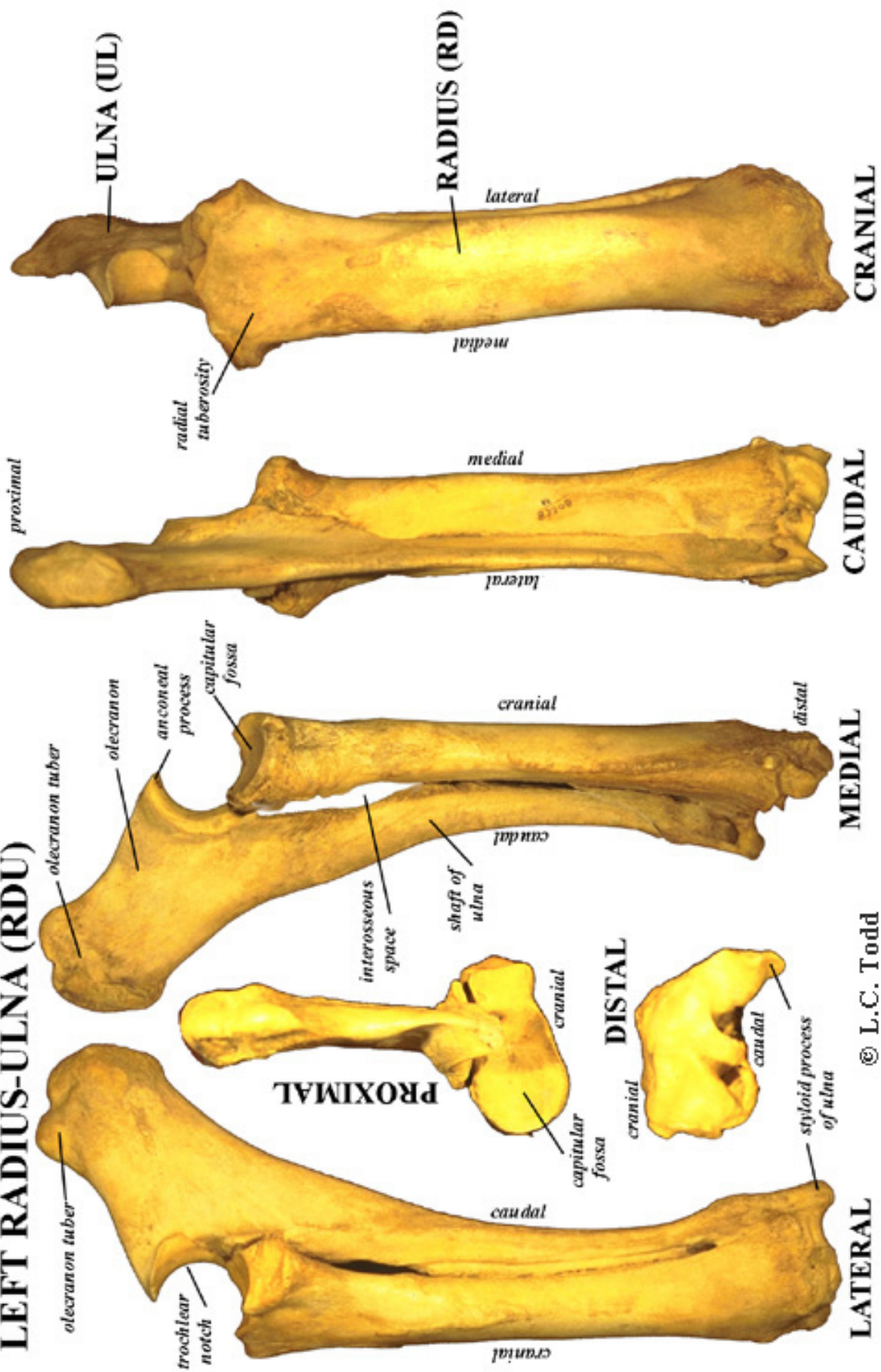


© L.C. Todd

LEFT HUMERUS (HM)

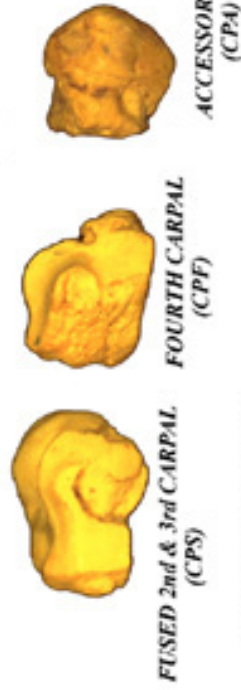
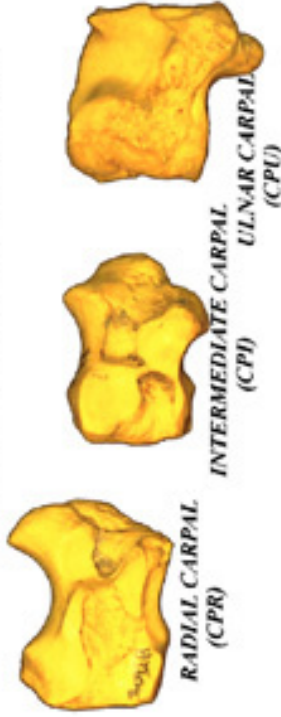


LEFT RADIUS-ULNA (RDU)

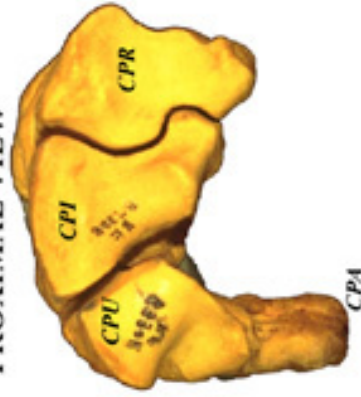


© L.C. Todd

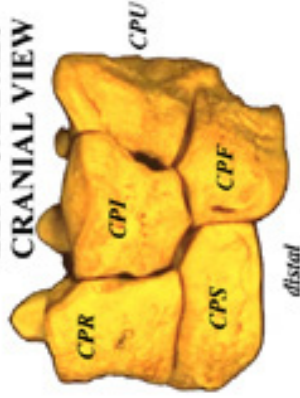
LEFT CARPALS - LATERAL VIEW



LEFT CARPALS PROXIMAL VIEW



LEFT CARPALS CRANIAL VIEW



METACARPAL (MC) LEFT CRANIAL VIEW



METACARPAL (MC) LEFT PROXIMAL VIEW

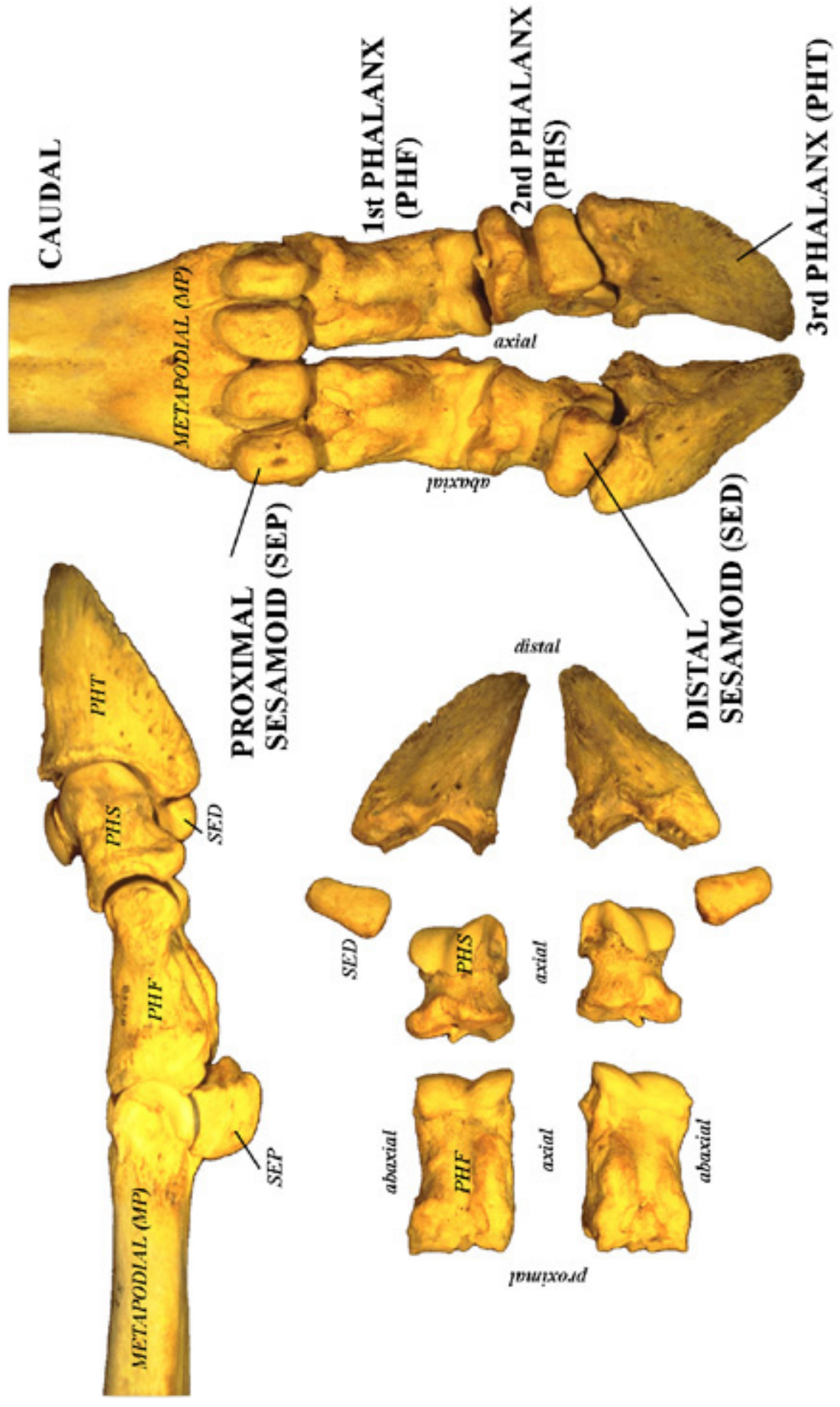


METACARPAL (MC) LEFT DISTAL VIEW



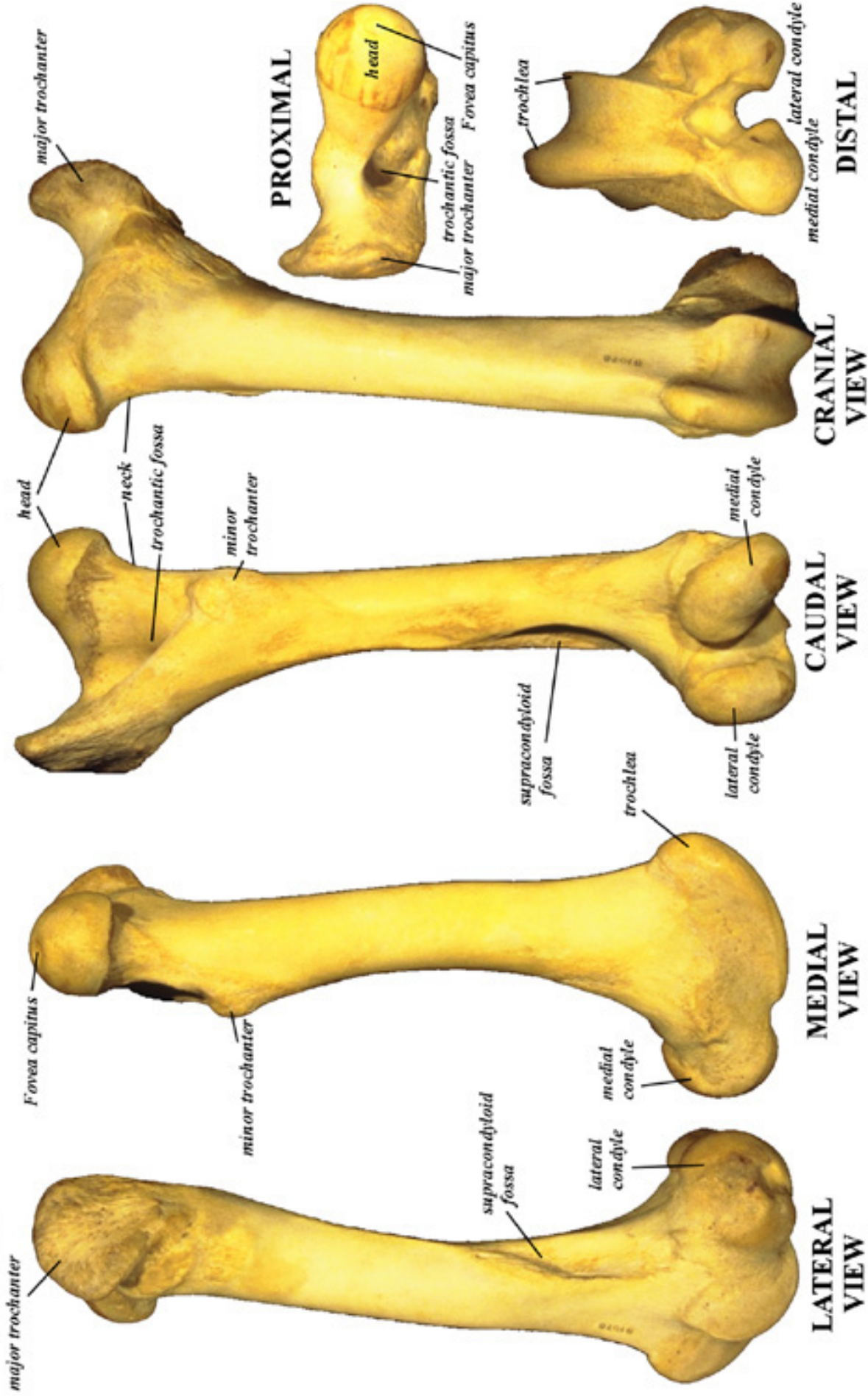
PHALANGES (PH) AND SESAMOIDS (SE)

© L.C. Todd



LEFT FEMUR (FM)

© L.C. Todd



LEFT TIBIA (TA)

© L.C. Todd



LEFT TARSALS (TR)



© L.C. Todd

BISON METATARSAL - LEFT (MODERN COW)

LATERAL



MEDIAL



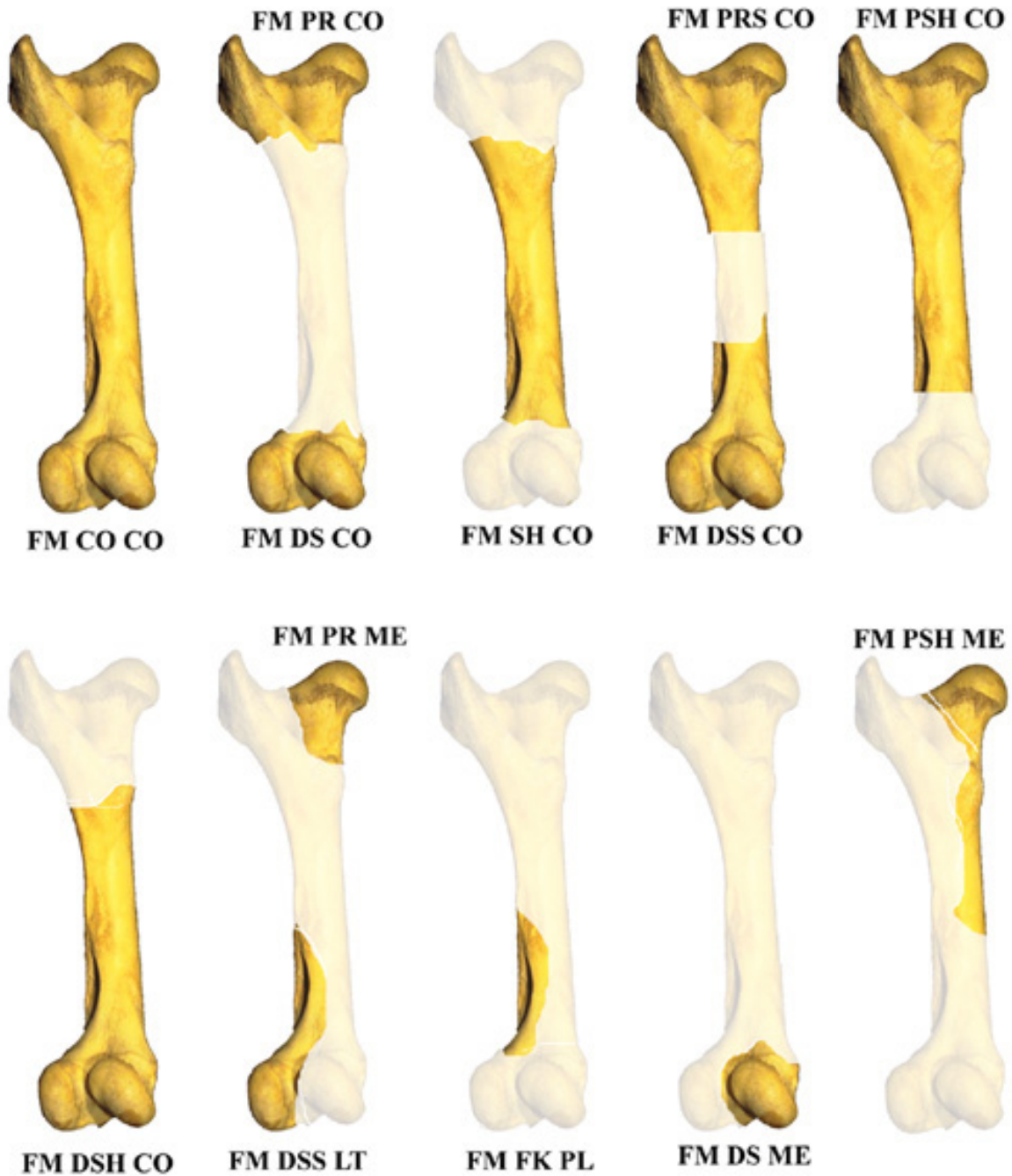
CAUDAL



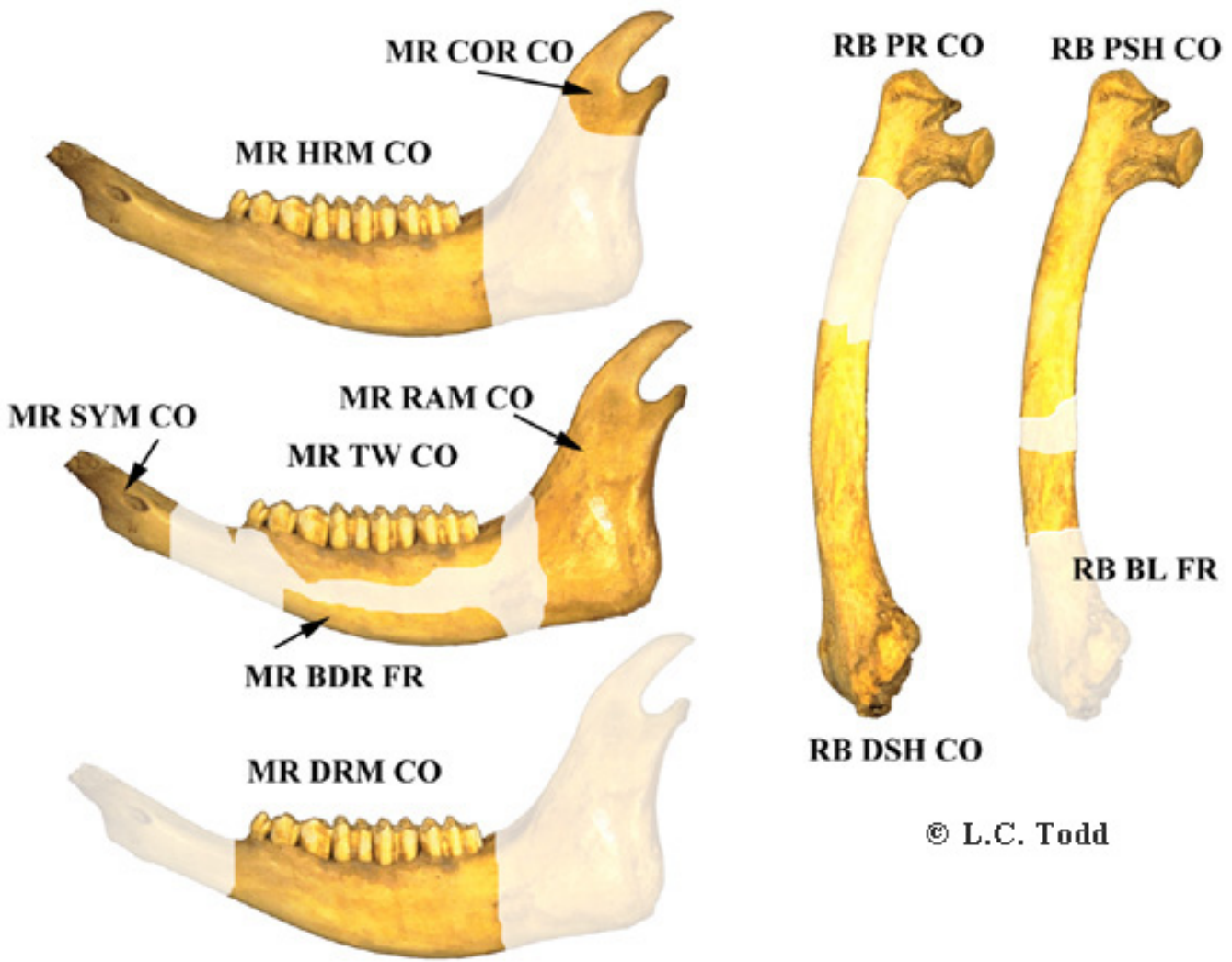
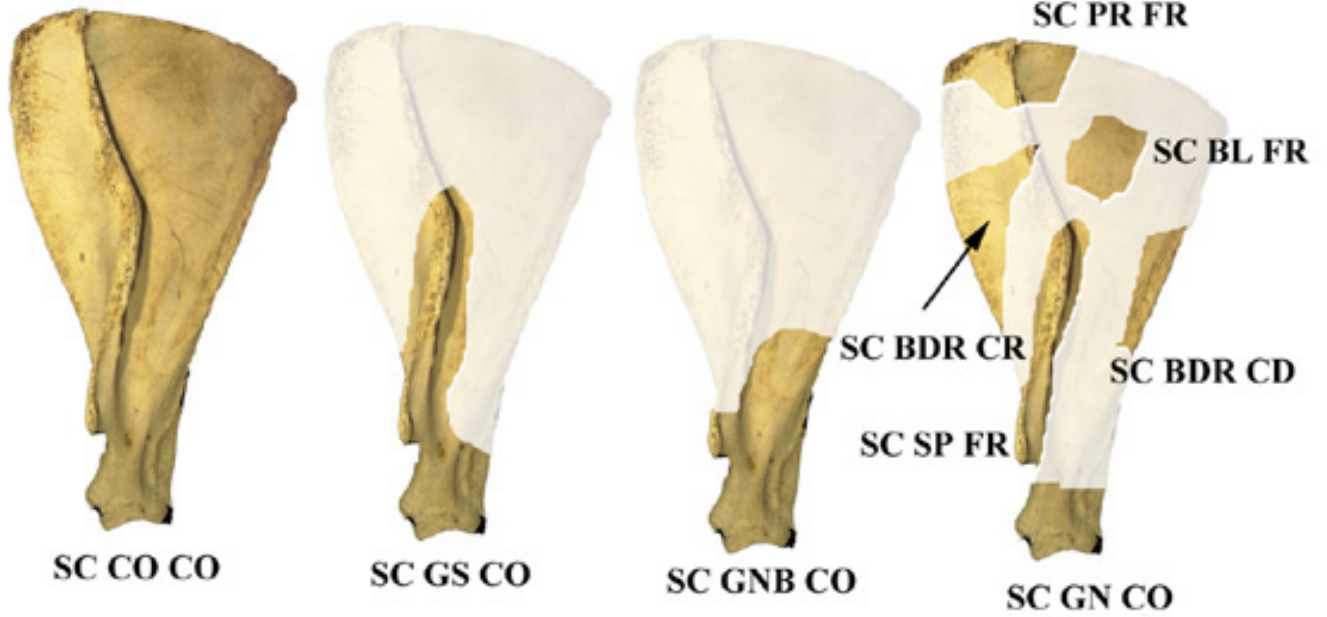
CRANIAL



EXAMPLES OF USE OF ELEMENT (EL), PORTION (POR) AND SEGMENT (SG) CODES FOR LONG BONES



PORTION & SEGMENT CODE EXAMPLES



PORTION & SEGMENT CODE EXAMPLES ULNA AND VERTEBRAE

UL PRS CO



UL DS CO

UP PR CO



UL SH FR

UL OLC CO



UL ANC CO

UL SH CR

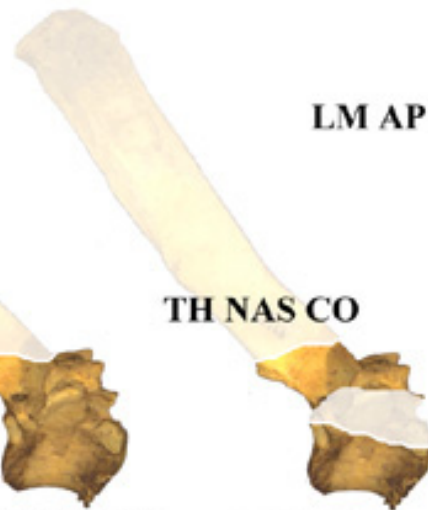
UL PR CR



TH SP FR



TH CNS CO

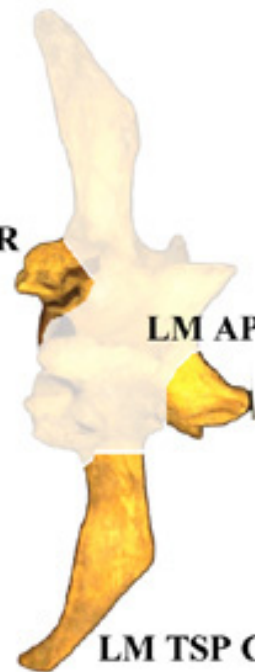


TH CNN CO

TH NAS CO

TH CN CO

LM AP CR



LM AP CD

LM TSP CO

EXAMPLES OF USE OF ELEMENT (EL), PORTION (POR) AND SEGMENT (SG) CODES FOR IMMATURE LONG BONES

PRE



FM DF CO



FM DDS CO



RD DFP CO



FM DSE CO



FM PRE LT



FM PRE ME

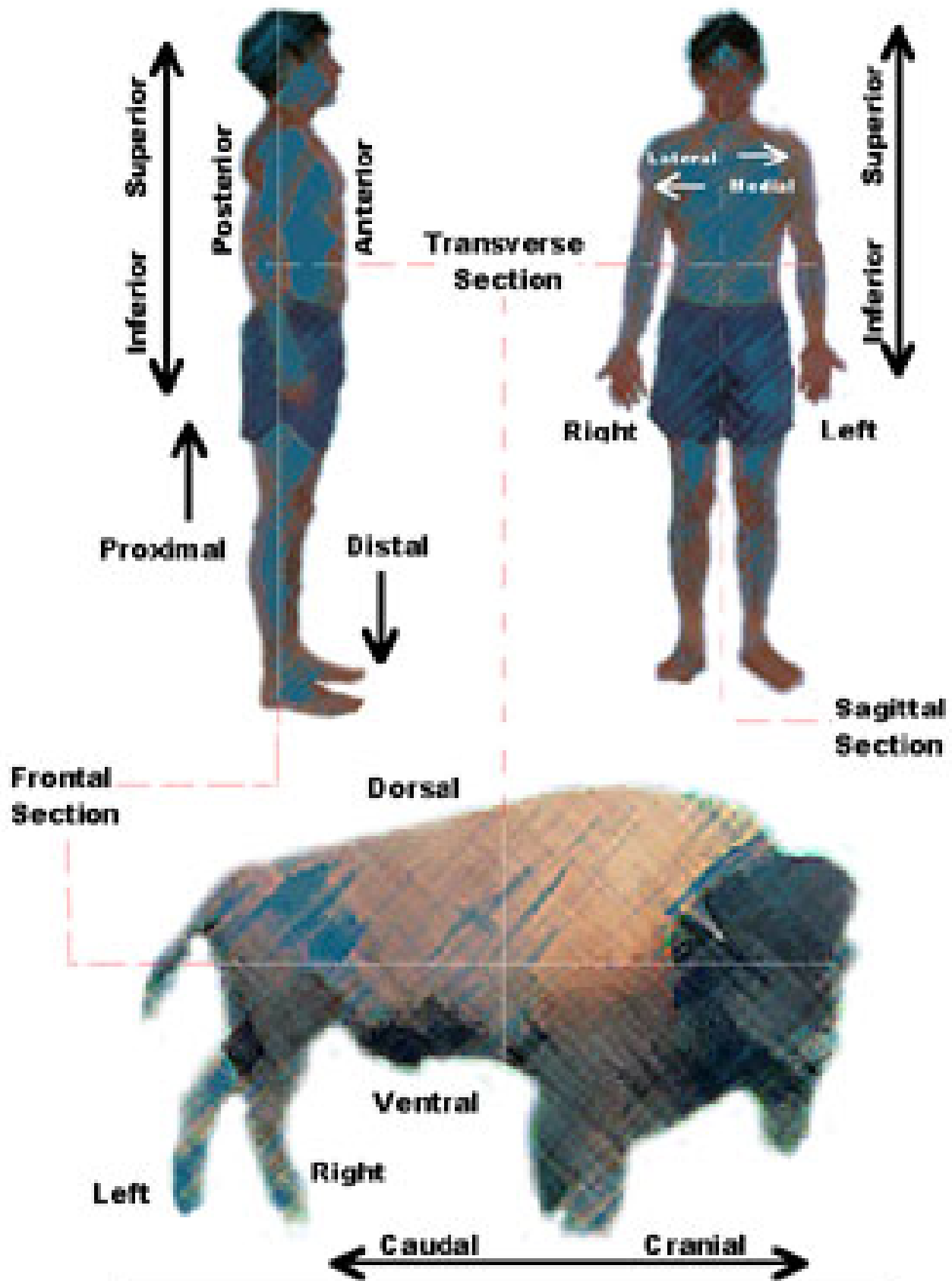


FIGURE 1.1 DIRECTIONAL TERMS AND TOPOGRAPHIC PLAINS